

Milesight

AI Motorized Pro Bullet Network Camera

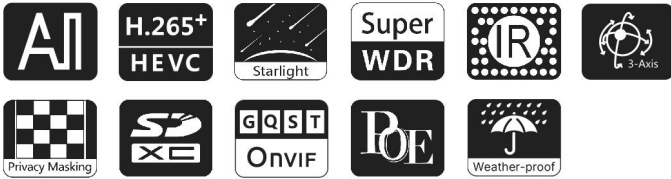
NDAA

IP67

Motorized Lens



DATASHEET



KEY FEATURES

- ▶ NDAA Compliance (The fully NDAA-compliant products are well suited for government, defense and a range of projects subject to the NDAA.)
- ▶ Smart IR II (Combining the High Beam and Low Beam to adjust IR intensity to fit different lighting conditions.)
- ▶ HLC (High Light Compensation. Improving image visibility under strong light sources.)
- ▶ 120dB Super WDR (Excellent performance even when the ratio of the luminosity of brightest and darkest is up to 120dB.)
- ▶ 90fps High Frame Rate (Camera can easily catch images with no latency despite of the high-speed movement.)
- ▶ 256G (Supporting ultra-large external microSD/SDHC/SDXC card storage up to 256G.)
- ▶ Smart Stream (Bandwidth, storage and bit rate are saved with Smart Stream On, eg, H.265+ saves 70%~80% bandwidth that of H.264.)

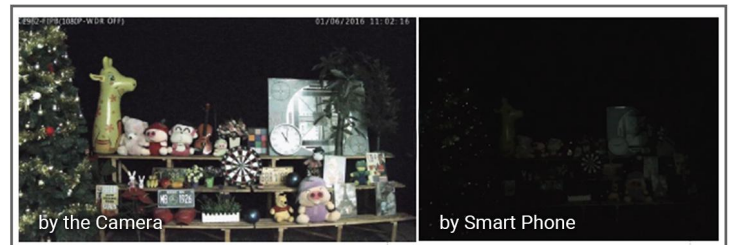
AI Video Analytics

- 8 intelligent VCA modes powered by AI engine, which can intelligently filter objects to focus on human and vehicle detection.
- People Counting technology provides high accuracy and real-time data based on AI algorithm with statistic reports.



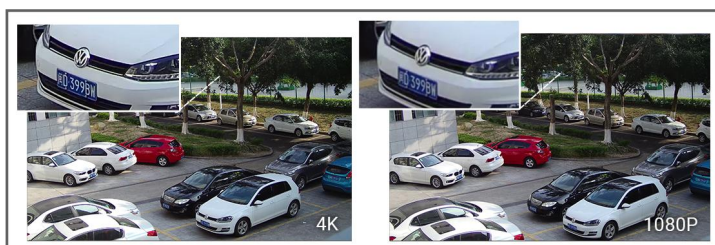
0.001Lux Ultra Low-light

The starlight camera is able to deliver high detailed color images even in low light environment reaching 0.001Lux(Color) or 0Lux(B/W), and near infrared light environments without any supplementary lighting.



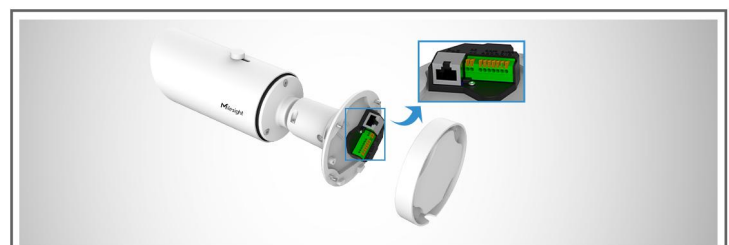
30fps@4K

Providing 4K HD resolution with frame rate of 30fps, the camera performs well in catching detailed image regardless of the moving speed.



Integrated Cable Management Bracket

Integrated Cable Management provides easier and faster installation for the users. Versatile interfaces such as PoE, DC, Audio I/O and Alarm I/O are available. The well-designed integrated junction box also makes the cable connection neat and tidy.



AI Motorized Pro Bullet Network Camera



| | Model | MS-C2862-R(T)F(I)PA (2MP) | MS-C2962-R(T)F(I)PA (2MP) | MS-C5362-F(I)PA (5MP) |
|--------|---|--|--|--|
| Camera | Image Sensor | 1/2" Progressive Scan CMOS | | 1/2.8" Progressive Scan CMOS |
| | Min. Illumination | Color: 0.001Lux@F1.2 | | Color: 0.002Lux@F1.2 |
| | | Color: 0.002Lux@F1.4 | | Color: 0.005Lux@F1.4 |
| | | B/W: 0Lux with IR on | | B/W: 0Lux with IR on |
| | WDR | 120dB Super WDR | | |
| | Shutter Time | 1/100000s~1s | | |
| | IR Distance | Up to 60m | Up to 60m(3.0~10.5mm/2.7~13.5mm) | |
| | Day/Night Mode | Day/Night/Auto/Customize/Schedule | | |
| S/N | >55dB | | | |
| Lens | Lens | Motorized 3.6~10mm@F1.4 P-Iris(Optional) | Motorized 2.7~13.5mm/3.0~10.5mm/7~22mm@F1.4 P-Iris(Optional) | |
| | Field of View | H96°~H42°/ D111°~D48°/ V55°~V23° | H92°~H32°/D107°~D37° /V51°~V18° (2.7~13.5mm) H93°~H33°/D107°~D38° /V52°~V18° (3.0~10.5m) H40°~H16°/D46°~D19° /V23°~V9° (7~22mm) | H89°~H30°/D111°~D37° /V66°~V22° (2.7~13.5mm) H90°~H31°/ D114°~D38° / V67°~V23°(3.0~10.5mm) H37°~H15°/D47°~D19° /V28°~V11° (7~22mm) |
| | Mount | Φ14 | | |
| | Focus Control | Auto/Manual | | |
| | Iris Control (Optional for I Series) | Auto/Manual | | |
| Video | Max. Image Resolution | 1920x1080 | | 2592x1944 |
| | Primary Stream | 60Hz: 90fps@(1920x1080)(Optional for T Series) , 60fps@(1920x1080, 1280x960, 1280x720, 704x576) 50Hz: 90fps@(1920x1080)(Optional for T Series) , 50fps@(1920x1080, 1280x960, 1280x720, 704x576) | | 60Hz: 30fps@(2592x1944, 2592x1520, 2048x1536, 1920x1080, 1280x960, 1280x720, 704x576) 50Hz: 25fps@(2592x1944, 2592x1520, 2048x1536, 1920x1080, 1280x960, 1280x720, 704x576) |
| | Secondary Stream | 60Hz: 90fps@(704x576)(Optional for T Series) , 60fps@(704x576, 640x480, 640x360, 352x288, 320x240) 50Hz: 90fps@(704x576)(Optional for T Series) , 50fps@(704x576, 640x480, 640x360, 352x288, 320x240) | | 60Hz: 30fps@(704x576, 640x480, 640x360, 352x288, 320x240) 50Hz: 25fps@(704x576, 640x480, 640x360, 352x288, 320x240) |
| | Tertiary Stream | 60Hz: 30fps@ (1280x720, 704x576, 640x480, 640x360, 352x288, 320x240) 50Hz: 25fps@ (1280x720, 704x576, 640x480, 640x360, 352x288, 320x240) | | |
| | Video Compression | H.265+/H.265(HEVC)/H.264+/H.264/MJPEG | | |
| | Video Bit Rate | 16Kbps~16Mbps(CBR/VBR Adjustable) | | |
| | Privacy Masking | Up to 24 areas | | |
| | ROI | Up to 8 areas | | |
| | Image Setting | Brightness/Contrast/Saturation/Sharpness | | |

AI Motorized Pro Bullet Network Camera



| | | |
|------------------------------|-------------------------|--|
| Interface | Ethernet | 1*RJ45 10M/100M Ethernet Port |
| | Audio I/O | 1/1 |
| | Alarm I/O | 1/1 |
| Network | Network Storage | NAS(Support NFS, SMB/CIFS), ANR |
| | Protocol | IPv4/IPv6, ARP, TCP, UDP, RTCP, RTP, RTSP, RTMP, HTTP, HTTPS, DNS, DDNS, DHCP, FTP, NTP, SMTP, SNMP, UPnP, Bonjour, SIP, PPPoE, VLAN, 802.1x, QoS, IGMP, ICMP, SSL |
| Audio | Audio Compression | G.711/AAC/G.722/G.726 |
| | Audio Sampling Rate | 8/16/32/44.1/48KHz |
| | Audio Bit Rate | 16~256kbps |
| | Two-way Audio | Support |
| Intelligent Analytics | Video Analysis | Region Entrance, Region Exiting, Advanced Motion Detection, Tamper Detection, Line Crossing, Loitering, Object Left, Object Removed |
| | People Counting& Report | Count the number of people entering or exiting, up to 4 detection areas for regional people counting |
| System | Storage | Support microSD/SDHC/SDXC Card Local Storage, up to 256G |
| | Advanced Function | Heat Map, BLC, HLC, 2D DNR, 3D DNR, AWB, IP Address Filtering, AGC, Anti-flicker, Corridor Mode, Deblur, Watermark |
| | SIP/VoIP Support | Yes, Voice & Video-over-IP |
| | Event Trigger | Motion Detection, Network Disconnection, External Input, Audio Alarm, etc. |
| | Event Action | FTP Upload, SMTP Upload, SD Card Record, External Output, SIP Phone, HTTP Notification, etc. |
| | System Compatibility | ONVIF Profile G & Q & S & T, API |
| General | Working Temperature | -40°C~60°C |
| | Working Humidity | 0~90%(Non-condensing) |
| | Power Supply | PoE (802.3af) / DC 12V±10% |
| | Power Consumption | 10W MAX 13W MAX(With IR on) 9W MAX 11W MAX(With IR on) |
| | Housing | Up to IP67-rated for Weather-resistant Performance |
| | Weight | 1080g |
| | Dimensions | 134mmX126mmX285mm |
| | Warranty | 3/5 Years |

AI Motorized Pro Bullet Network Camera



| | Model | MS-C8162-F(I)PA (4K) | MS-C8262-F(I)PA (4K) |
|---|-----------------------|--|--|
| Camera | Image Sensor | 1/2.8" Progressive Scan CMOS | 1/1.8" Progressive Scan CMOS |
| | Min. Illumination | Color: 0.01Lux@F1.2 Color: 0.012Lux@F1.4 B/W: 0Lux with IR on | Color: 0.006Lux@F1.2 Color: 0.009Lux@F1.4 B/W: 0Lux with IR on |
| | WDR | 120dB Super WDR | |
| | Shutter Time | 1/100000s~1s | |
| | IR Distance | Up to 60m | |
| | Day/Night Mode | Day/Night/Auto/Customize/Schedule | |
| | S/N | >55dB | |
| | Lens | Lens | Motorized 2.7~13.5mm@F1.4 P-Iris(Optional) |
| Field of View | | H96°~H33°/ D112°~D37°/ V53°~V18° | H110°~H46°/D126°~D54°/ V61°~V25° |
| Mount | | Φ14 | |
| Focus Control | | Auto/Manual | |
| Iris Control (Optional for I Series) | | Auto/Manual | |
| Video | Max. Image Resolution | 3840x2160 | |
| | Primary Stream | 60Hz: 30fps@(3840x2160, 3072x2048, 2592x1944, 2592x1520, 2048x1536, 1920x1080, 1280x960, 1280x720, 704x576) 50Hz: 25fps@(3840x2160, 3072x2048, 2592x1944, 2592x1520, 2048x1536, 1920x1080, 1280x960, 1280x720, 704x576) | |
| | Secondary Stream | 60Hz: 30fps@(704x576, 640x480, 640x360, 352x288, 320x240) 50Hz: 25fps@(704x576, 640x480, 640x360, 352x288, 320x240) | |
| | Tertiary Stream | 60Hz: 30fps@(1280x720, 704x576, 640x480, 640x360, 352x288, 320x240) 50Hz: 25fps@(1280x720, 704x576, 640x480, 640x360, 352x288, 320x240) | |
| | Video Compression | H.265+/H.265(HEVC)/H.264+/H.264/MJPEG | |
| | Video Bit Rate | 16Kbps~16Mbps(CBR/VBR Adjustable) | |
| | Privacy Masking | Up to 24 areas | |
| | ROI | Up to 8 areas | |
| | Image Setting | Brightness/Contrast/Saturation/Sharpness | |
| Interface | Ethernet | 1*RJ45 10M/100M Ethernet Port | |
| | Audio I/O | 1/1 | |
| | Alarm I/O | 1/1 | |

AI Motorized Pro Bullet Network Camera

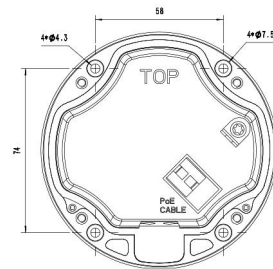
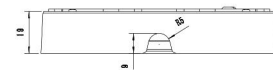
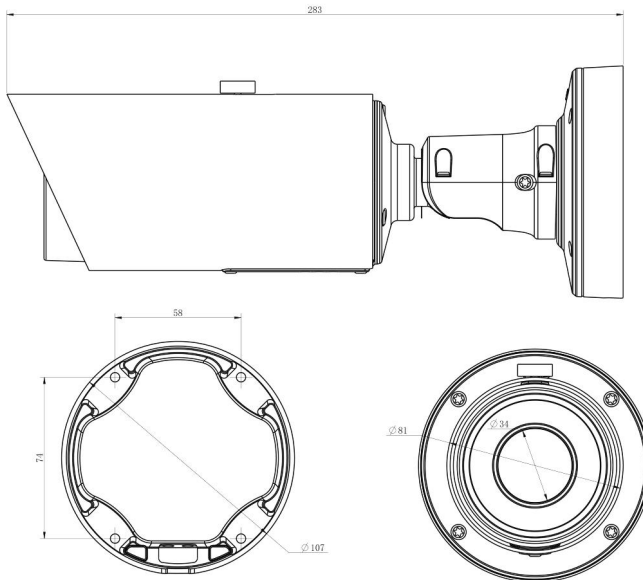
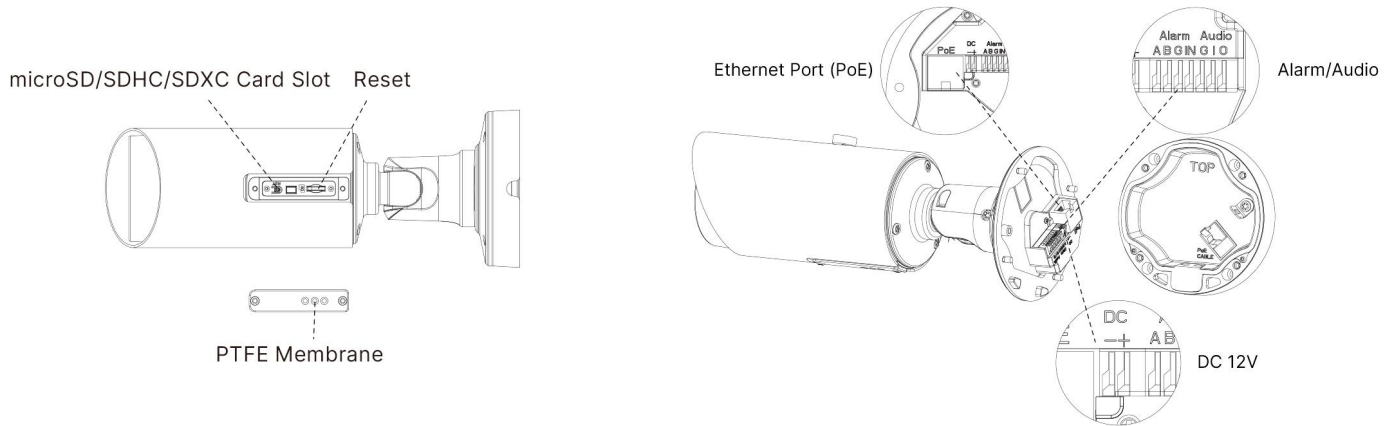


| | | | |
|------------------------------|-------------------------|--|--------------------------------|
| Network | Network Storage | NAS(Support NFS, SMB/CIFS), ANR | |
| | Protocol | IPv4/IPv6, ARP, TCP, UDP, RTCP, RTP, RTSP, RTMP, HTTP, HTTPS, DNS, DDNS, DHCP, FTP, NTP, SMTP, SNMP, UPnP, Bonjour, SIP, PPPoE, VLAN, 802.1x, QoS, IGMP, ICMP, SSL | |
| Audio | Audio Compression | G.711/AAC/G.722/G.726 | |
| | Audio Sampling Rate | 8/16/32/44.1/48KHz | |
| | Audio Bit Rate | 16~256kbps | |
| | Two-way Audio | Support | |
| Intelligent Analytics | Video Analysis | Region Entrance, Region Exiting, Advanced Motion Detection, Tamper Detection, Line Crossing, Loitering, Object Left, Object Removed | |
| | People Counting& Report | Count the number of people entering or exiting, up to 4 detection areas for regional people counting | |
| System | Storage | Support microSD/SDHC/SDXC Card Local Storage, up to 256G | |
| | Advanced Function | Heat Map, BLC, HLC, 2D DNR, 3D DNR, AWB, IP Address Filtering, AGC, Anti-flicker, Corridor Mode, Deblur, Watermark | |
| | SIP/VoIP Support | Yes, Voice & Video-over-IP | |
| | Event Trigger | Motion Detection, Network Disconnection, External Input, Audio Alarm, etc. | |
| | Event Action | FTP Upload, SMTP Upload, SD Card Record, External Output, SIP Phone, HTTP Notification, etc. | |
| | System Compatibility | ONVIF Profile G & Q & S & T, API | |
| General | Working Temperature | -40°C~60°C | |
| | Working Humidity | 0~90%(Non-condensing) | |
| | Power Supply | PoE (802.3af) / DC 12V±10% | |
| | Power Consumption | 10W MAX 11W MAX(With IR on) | 10W MAX 12W MAX(With IR on) |
| | Housing | Up to IP67-rated for Weather-resistant Performance | |
| | Weight | 1080g | |
| | Dimensions | 134mmX126mmX285mm | |
| | Warranty | 3/5 Years | |

AI Motorized Pro Bullet Network Camera



Structure Diagrams



Units: mm

Accessories Support

A01 Pole Mount

Weight: 720g
Dimensions: 170*51.5*152.6mm



A03 External Corner Bracket

Weight: 900g
Dimensions: 170*152.5*76.3mm



A62 Junction Box

Weight: 510g
Dimensions: 134*126*40mm



Mlesight Technology | www.mlesight.com
Contact Us: sales@mlesight.com | support@mlesight.com

Add: 220 NE 51st Street, Oakland Park, Florida 33334, USA
Tel: +1-800-561-0485

Add: 925, Anyang SK V1 Center, LS-ro 116beon-gil, Dongan-gu, Anvang-si, Korea
Tel: +82-31-990-7732

Add: Building C09, Software Park Phase III, Xiamen 361024, Fujian, China
Tel: +86-592-5922772

